

KIP 70 SERIES

*Advancing Technical Print Technology
and Maximizing Productivity*



SYSTEM
SOFTWARE K 

Intelligent Productivity in every KIP System

7 SERIES | 71 SERIES | 75 SERIES | 79 SERIES

Introducing **KIP 70 SERIES**

*Experience the most advanced technology
in Technical Printing*



KIP 7 SERIES

Exceptional Multi-Function Value

3 D / A1 size prints per minute (1 Roll)

The consistent print speed and low cost of operation, compared to inkjet devices, make the KIP 770 the ideal solution for organizations requiring increased productivity and better bottom line results. The exceptional small footprint allows the KIP 770 to be placed in virtually any workspace making it the perfect companion for decentralized work spaces.

- **KIP 770 MFP System**

KIP 71 SERIES

Ultimate Multi-Touch Performance

6 D / A1 size prints per minute (2 Roll)

The cloud connected productivity of the KIP 7170 system is designed to satisfy the most demanding needs of the decentralized workforce. The KIP 7170 easily integrates into the daily workflow with a range of simple to use applications that allows users the flexibility to create, manage and distribute projects with confidence.

- **KIP 7170 MFP System**



KIP 75 SERIES

Dynamic Design - Exceptional Value

10 D / A1 size prints per minute (2 or 4 Roll)

The KIP 75 Series hourly productivity and configuration versatility will give your organization the confidence and flexibility to meet the always important deadlines associated with technical printing. The excellent across-the-board performance of the system will satisfy the most stringent demands on quality and productivity.

- **KIP 7570 Print System**
- **KIP 7580 MFP System**
- **KIP 7590 MFP Production System**

KIP 79 SERIES

Smart Solutions - Superior Productivity

14 D / A1 size prints per minute (2 or 4 Roll)

Production environments require consistent print quality, easy operation and complete control of the system including media management, queue control, and accounting for all print, scan and copy activity. The KIP 79 Series puts the complete control of print management at your fingertips.

- **KIP 7970 Print System**
- **KIP 7980 MFP System**
- **KIP 7990 MFP Production System**

KIP 70 SERIES

*Built for the workgroup,
designed for the individual*

As a world leader in wide format document production technology, KIP is committed to providing the highest value and standards by combining the best in hardware and software technology to create superior products at affordable prices. KIP systems are quality engineered for production class operation and reliability and incorporates state-of-the-art technology with advanced self-diagnostic systems to maintain system efficiency and maximum productivity.



KIP 70 SERIES

WORKFLOW EFFICIENCY

The KIP 70 Series provide a comprehensive solution for wide format printing tasks that require the highest levels of quality and performance. Built to meet the needs of any size production environment, every KIP 70 Series system is delivered with the same workflow applications designed for maximum productivity.

Enhanced management features ensure administrative control of submission applications, cloud printing permissions and pre-set print, scan & copy values to achieve consistency on all systems.

Intelligent communication features in every KIP 70 Series system provide immediate feedback through touchscreen, PC and E-mail notifications when systems require toner or replacement media, further contributing to workflow efficiency.

KIP 70 SERIES

FEATURES & BENEFITS

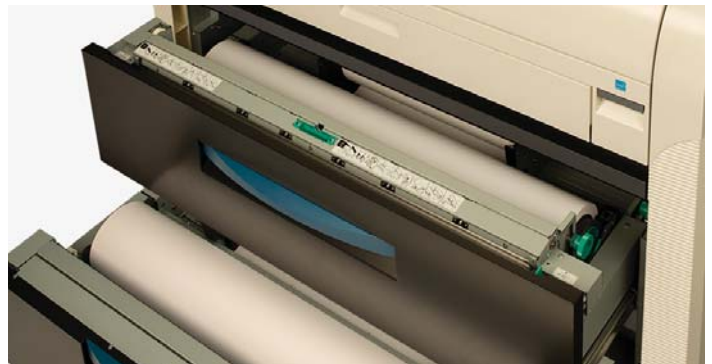
- 12" Smart System K Touchscreen
- Standard Top Stacking
- Optional Rear Stacking or KIPFold
- KIP System K Print Management Suite
- Windows® and AutoCAD Drivers
- Workflow Automation
- Black & White Print Production
- Automatic Roll Trimming
- Quick Switch Technology
- Integrated USB Port for External Drives
- Media Load Assist
- Extended Print Lengths for Maximum Productivity
- Large Capacity Toner Cartridges for Continuous Print Runs and Productivity



Space Saving Footprint | Installation Simplicity Compact mechanical design with ease of serviceability as an engineering priority.



KIP Multi-Touch Touchscreen All system functions for the KIP 70 Series are performed through an integrated, 12" multi-touch style color display to copy, print and scan.



Quick Switch Technology The KIP 70 Series print technology eliminates roll switching delays for increased productivity. Two or four media rolls and a sheet feeder deliver mixed print sizes at full production speed.



KIP Print Submission KIP ImagePro is a single software solution designed to simplify every stage of color and black & white wide format workflow.

KIP 7 SERIES

EXCEPTIONAL MULTI-FUNCTION VALUE

3 D / A1 size prints per minute (1 Roll)

KIP 770 MFP System

The consistent print speed and low cost of operation, compared to inkjet devices, make the KIP 770 the ideal solution for organizations requiring increased productivity and better bottom line results. The exceptional small footprint allows the KIP 770 to be placed in virtually any workspace making it the perfect companion for decentralized work groups.

The KIP 770 delivers powerful multi-function features in an easy-to-use eco² design and adds the optional flexibility to scan in color to a variety of network, mailbox and cloud locations. Add the optional cut sheet paper tray, and the KIP 770 can cover virtually every standard print size.



Perfect View

Adjustable 12" touchscreen for the ideal viewing and management of system features.

Print Production
1,080 sq. ft./hour

KIP 7 SERIES

Compact Console Design

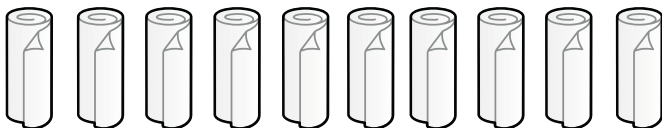
The KIP 770 is the highest build quality wide format multi-function system in its class, setting new standards for professional quality at breakthrough value and performance.

The compact design of the KIP 770 provides front access to the system touchscreen, easy paper loading, and original & print delivery.

Paper Versatility

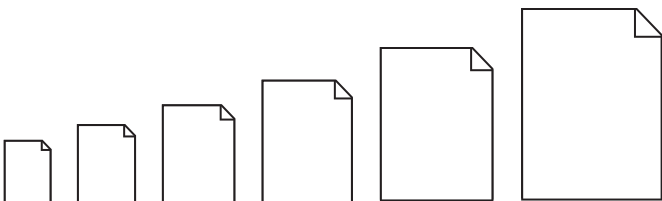
Paper tray for standard sizes up to 18" x 24" / 420 mm x 594 mm extends the range of print sizes that can be produced without switching rolls.

Paper Roll Page Sizes



11" 12" 15" 17" 18" 22" 24" 30" 34" 36"

Paper Tray Page Sizes



8.5x11 9x12 11x17 12x18 17x22 18x24



KIP 770 multi-function print, copy, & scan system (with included color scanning)



KIP 770 RC multi-function system with paper tray for cut sheet printing up to 18" x 24"

KIP 7 SERIES SYSTEM FEATURES

- Single Footprint Configuration
- Color Touch Controls
- Front Print Delivery System
- 600 x 1800 dpi Printing
- High Definition Print Technology
- Print from & Scan to the Cloud
- CIS Scanning Technology - with Real-Time Thresholding Technology

KIP 71 SERIES

ULTIMATE MULTI-TOUCH PERFORMANCE

6 D / A1 size prints per minute (2 Roll)

KIP 7170 MFP System

The cloud connected productivity of the KIP 7170 system is designed to satisfy the most demanding needs of the decentralized workforce. The KIP 7170 easily integrates into the daily workflow with a range of simple to use applications that allows users the flexibility to create, manage and distribute projects with confidence. The best in class rating and proven power of the KIP 7170 also make it the ideal solution to support the print, copy and scan demand in a centralized print environment.

Integrated with KIP System K Software, multi-touch touchscreen, 600 x 2400 dpi resolution printing, color scanning and top stacking, the KIP 7170 creates the most powerful decentralized wide format MFP system in the industry.



Perfect View

Adjustable 12" touchscreen for the ideal viewing and management of system features.

Print Production

2,160 sq. ft/hour

KIP 71 SERIES

Intelligent Productivity in every KIP System

Multi-Function Space Saving System

Single space saving footprint design reduces the environmental impact of the KIP 7170. The small footprint ensures that the design requirements of the corporate workspace are minimized for maximum productivity.

Production System with Stacking

KIP's stackers include advanced intelligent online systems that suit your exact needs, while maintaining the flexibility to grow as demands increase. Operators have the flexibility to direct prints and copies to a preferred destination – the top stacking system or a rear system for increased production.

Production System with Folding

The KIPFold 1000 and KIPFold 2800 finishing systems automate wide format document finishing by providing folding, stacking and collation in a compact design.

KIP 71 SERIES SYSTEM FEATURES

- Single Footprint Configuration
- Integrated Top Stacking
- Rear Delivery for High Production
- 600 x 2400 dpi Printing
- High Definition Print Technology
- Print from & Scan to the Cloud
- Integrated USB Drives



KIP 7170 multi-function system with integrated top stacking print tray



KIP 7170 production system with integrated top stacking print tray & optional KIP 1200 high capacity stacker



KIP 7170 production system with optional KIPFold 1000 online fan folder



KIP 7170 production system with optional KIPFold 2800 online fan folder

KIP 75 SERIES

DYNAMIC DESIGN - EXCEPTIONAL VALUE

10 D / A1 size prints per minute (2 or 4 Roll)

KIP 7570 Print System | **KIP 7580 MFP System** | **KIP 7590 MFP Production System**

The innovative space saving design of the KIP 75 Series with top stacking delivers increased speed, impeccable b&w print quality, setting new performance standards to easily meet project timelines while reducing cost. High Definition Print Technology delivers rich expressive black density with advanced greyscale and fine line enhancement. The 7570 Print System easily handles the demands of any network printing environment. Manage daily print, scan and copy requirements effortlessly with the KIP 7580 MFP or upgrade to the production power of the KIP 7590 MFP to optimize production with confidence.

The KIP 75 Series hourly productivity and configuration versatility will give your organization the confidence and flexibility to meet the demands associated with technical printing.



Perfect View

Adjustable 12" touchscreen for the ideal viewing and management of system features.

Print Production

3,600 sq. ft/hour



KIP 75 SERIES

Intelligent Productivity in every KIP System

KIP 7570 Network Print Systems

KIP cloud connectivity enables productive printing access anytime, anywhere. The KIP 7570 network print system makes working smarter easy for small or large workgroups. The Perfect View adjustable KIP smart multi-touchscreen offers intuitive printing directly from a variety of network resources, cloud connections, removable media, local mailboxes and historical queue; you don't have to leave the printer to perform important tasks. Easily upgrade the KIP 7570 to a multi-function print system.



KIP 7570 network print system with integrated top stacking print tray



KIP 7580 multi-function system with integrated CIS scanner & top stacking print tray

KIP 7580 Multi-Function Systems

The KIP 7580 MFP Systems with CIS scanning offer a new innovative space saving design with top stacking that fits where you need it – in tight spaces or against the wall. Automated workflow efficiency is integrated with the KIP smart multi-touchscreen for powerful single touch efficiency.

KIP 7590 Multi-Function Production Systems

Optimize production with confidence. The KIP 7590 delivers intelligent productivity that expands enterprise workflow capabilities and efficiency. The modular footprint design includes a KIP 2300 CCD scanner that sets a uniquely high standard for color scanning speed, face up/face down/thick media document feeding versatility and digital imaging quality.



KIP 7590 MFP system with KIP 2300 CCD production scanner

KIP 75 SERIES SYSTEM FEATURES

- Space Saving Automation
- KIP Smart Multi Touchscreen
- System K Print Management Suite
- High Definition Print Technology
- Convenient Top or Production Stacking



KIP 7570 print system & optional KIPFold 2800 online fan & cross folder

KIP 79 SERIES

SMART SOLUTIONS - SUPERIOR PRODUCTIVITY

14 D / A1 size prints per minute (2 or 4 Roll)

KIP 7970 Print System | **KIP 7980 MFP System** | **KIP 7990 MFP Production System**

The KIP 79 Series print systems accelerate print production possibilities with consistent speed productivity. High Definition Print Technology delivers rich expressive black density with advanced greyscale and fine line enhancement. The cloud connected KIP 79 Series is the most productive b&w print system in its class, delivering cost effective operation, increased hourly productivity, daily reliability and long term performance that makes this system the perfect solution for centralized and decentralized production environments.

Production environments require consistent print quality, easy operation and complete control of the system including media management, queue control, and accounting for all print, scan and copy activity. The KIP 79 Series system ensures that the system status and print management control is at your fingertips.



Perfect View

Adjustable 12" touchscreen for the ideal viewing and management of system features.

Print Production

5,040 sq. ft/hour



KIP 79 SERIES

Intelligent Productivity in every KIP System

KIP 7970 Print Systems

The KIP 7970 network print system with top stacking meets the tough workflow demands of digital print environments. The Perfect View adjustable KIP smart multi-touchscreen is ideal for selecting multiple files from a variety of network resources for print set submission and managing system features.



KIP 7970 network print system with integrated top stacking print tray

KIP 7980 Multi-Function Systems

KIP 7980 MFP systems feature an integrated CIS scanner and innovative top stacking to fit where you need it – in tight spaces or against the wall for easy access to all system features. Increase copy, scan and print workflow efficiency with the powerful KIP smart multi-touchscreen for intuitive feature selection and easy operation. Zoom, rotate and pan vivid on-screen previews for eight point Area of Interest editing and printing.



KIP 7980 multi-function system with integrated CIS scanner & top stacking print tray

KIP 7990 Multi-Function Production Systems

The KIP 7990 Production MFP systems address the current reality of demanding print runs and compressed delivery times coupled with the highest quality expectations. Operators will enjoy superior pre-flight and print submission productivity using the professional applications within the KIP System K Print Management Suite. The KIP 2300 CCD production scanner sets a uniquely high standard for color scanning speed, face up/face down/thick media document feeding versatility and digital imaging quality.



KIP 7990 MFP system with KIP 2300 CCD production scanner

KIP 79 SERIES SYSTEM FEATURES

- Production Performance, Quality and Reliability
- System K Print Management Suite
- KIP Smart Multi Touchscreen
- Intelligent Workflow Automation
- High Definition Print Technology



KIP 7990 production system with KIP 2300 scanner & optional KIPFold 2800 online fan & cross folder

KIP 70 SERIES SPECIFICATIONS

General	7 Series	71 Series	75 Series	79 Series
Description	Monochrome wide format print/copy/scan with color scanner			
Type	Electrophotography (LED) with organic photoconductor (OPC) and closed toner system			
Speed D Size per Minute	3	6	10	14
Warm Up Time (from cold)	Less than 2 minutes from standby			
Configurations	MFP	MFP	P / MFP	P / MFP
Roll Options	1 Roll	2 Roll	2 or 4 Roll	2 or 4 Roll
Output Delivery	Front	Top / Rear	Top / Rear	Top / Rear
Dimensions	57" (w) x 33" (d) x 52" (h) / 1450 mm x 833 mm x 1330 mm	63" (w) x 28" (d) x 59" (h) / 1590 mm x 700 mm x 1510 mm	63" (w) x 29" (d) x 63" (h) / 1600 mm x 720 mm x 1600 mm	67" (w) x 33" (d) x 59" (h) / 1702 mm x 835 mm x 1500 mm
Weight	390 lb. / 177 kg with stand	538 lb. / 244 kg	MFP (4 Roll) 624 lb./283 kg Printer (4 Roll) 587 lb./266 kg	MFP (4 Roll) 915 lb./415 kg Printer (4 Roll) 860 lb./390 kg
Electrical Requirements	120V plus/minus 10%, 50/60Hz, 12A	120V plus/minus 10%, 50/60Hz, 12A	220V-240V +6% or -10%, 50/60Hz, 13A	220V-240V +6% or -10%, 50/60Hz, 15A
Power Consumption (Standby)	300W	500W	430W	1,100W
Power Consumption (Printing)	700W	1,100W	< 1,500W	2,700W

Printer

Print Resolution	600 dpi x 1800 dpi	600 dpi x 2400 dpi	600 dpi x 2400 dpi	600 dpi x 2400 dpi
Paper Capacity	1 Roll	2 Roll	2 or 4 Roll	2 or 4 Roll
Output Sizes Width	11" - 36"	11" - 36"	11" - 36"	11" - 36"
Output Sizes Length	8 ft. / 24 m	20' / 6 m (standard), 500' / 150 m based on media validation		
Paper Weight	Bond 18-24 lb., Vellum/Translucent Bond 18-20 lb., film 3.5 - 4 mil			
Media Type	Bond / Vellum / Film			

Controller

Controller Type	KIP System K Controller with Windows 7 Embedded			
Memory	2GB DDR3 Standard - Upgradable to 4 GB			
Hard Drive	Minimum 320 GB - Unlimited Upgrade			
Supported File Type	DWF, PDF, PDF-A, HPGL 1/2, HP-RTL, Calcomp 906/907, CALS Group 4, TIFF Group 4, CIT/TG4, Grayscale TIFF, TIFF Packbits, PNG, JPEG			

Scanner

Scanner Type	CIS	CIS	CIS / CCD	CIS / CCD
Scan Resolution	600 dpi			
Scan Format	TIFF, Multipage TIFF, PDF, PDF-A, Multipage PDF, DWF, JPEG			
Scan Destination	Local USB (removable media), Mailboxes (local), FTP, SMB Cloud: Google Drive/Dropbox/Box/OneDrive/SharePoint			
Original Size Width	11" - 36" / 210 mm to 914 mm			
Original Thickness	0.05 mm - 1.60 mm (image quality over 0.25 mm not guaranteed)			



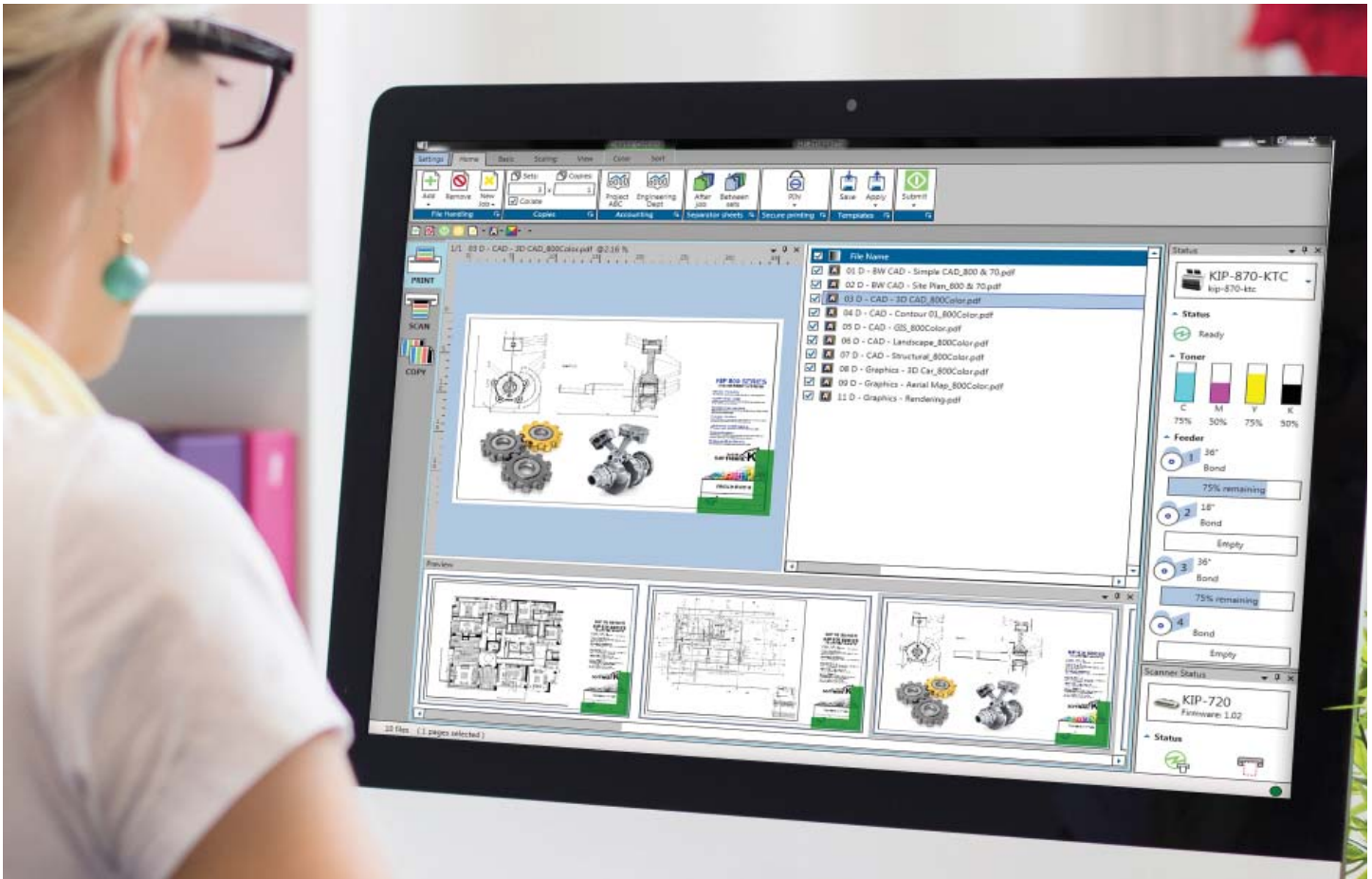
PRINT



COPY



SCAN



KIP ImagePro is a single software solution designed to simplify every stage of color and black & white wide format workflow.

STANDARD MODE

- Fast and Easy Print Control
- Quick Access Tool Bar
- Column Logic
- High Definition Viewer
- Image Clean Up
- Area of Interest

EXPANDED MODE

Features for Technical Production and Color Graphic Professionals:

- Color Management
- Nest, 2 Up, Paneling
- Job Validation
- Customizable Interface Pop Out
- Flexibility in System Configurations

KIP 70 Series



KIP 70, 800 and 900 Series Multi-touch Solutions

- Copy & Scan to Local/USB/LAN/Cloud (MFP)
- Print from Local/USB/LAN/Cloud
- Super View with Area of Interest
- Cloud Connect
- Data Security
- Smart Scan
- KIPFold Control

OPTIONS:

- Removable HD
- Card Reader



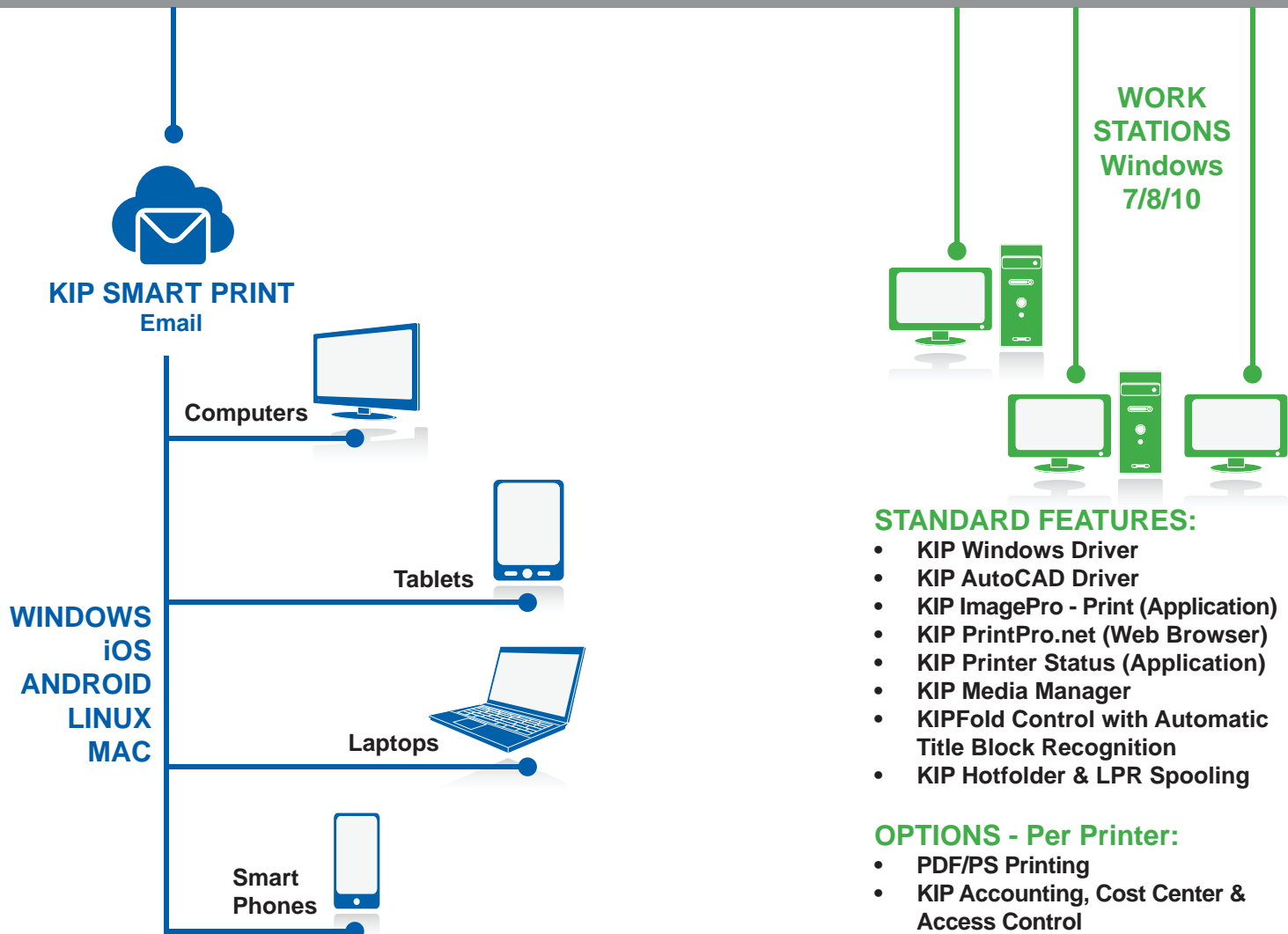
MFP

KIP 770 / 7170 / 75 / 79

Printer

75 / 79

LAN



KIP 800 Color Series



MFP
KIP 860 / 880 / 890

Printer
850 / 870

KIP 900 Color Series



MFP
KIP 980 / 990

Printer
KIP 970

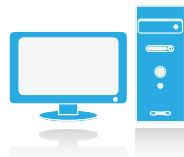
KIP 720 / 2300 Scan Systems Scan, Copy & Print



- KIP ImagePro - Scan & Copy:**
- Scan - Local/USB/LAN/Cloud
 - Copy - To KIP Color or B&W printer
 - Print - To KIP Color or B&W printer
 - Color Adjustment / Management
 - High Definition Viewer
 - Area of Interest
 - KIPFold Control

WORK STATIONS

MAC



STANDARD FEATURES:

- KIP PrintPro.Net (Web Browser)
- PostScript Printer Description File
- KIP Hotfolder Support
- LPR Spooling

LINUX



STANDARD FEATURES:

- KIP PrintPro.Net (Web Browser)
- KIP Hotfolder Support
- LPR Spooling

Comprehensive KIP System K features are available in the following brochures:

- KIP Multi-touch Solutions
- KIP PC & Web Print Solutions
- KIP Admin, Accounting & Access Control

THE COLOR OF KIP IS GREEN.

KIP is committed to product designs that promote environmental health and sustainability. KIP's goal is to consistently improve and refine the technologies in products that keep our planet green. KIP considers the total product life cycle - from the manufacturing process to final device disposal - in our shared ecosystems.



LOW EMISSIONS – HIGH EFFICIENCY

- KIP products all have a variety of sleep modes and power usage timers to reduce power consumption. All KIP systems are Energy Star qualified.
- During operation, the power consumption of KIP products are one of the lowest in the industry, thanks to efficiency in design.
- KIP's manufacturing processes have reduced electricity consumption by 33%, all while increasing productivity.



KIP.COM/GREEN | FOR MORE INFORMATION



www.KIP.com

USA: Phone: (800) 252.6793 | E-mail: info@kip.com **CANADA:** Phone: (800) 653.7552 | E-mail: info@kipcanada.com

KIP is a registered trademark of the KIP Group. All other product names mentioned herein are trademarks of their respective companies. All product features and specifications are subject to change without notice. Complete product specifications are available upon request. © 2017